

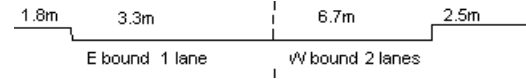
YEAR 2022

CORE STATION 1107

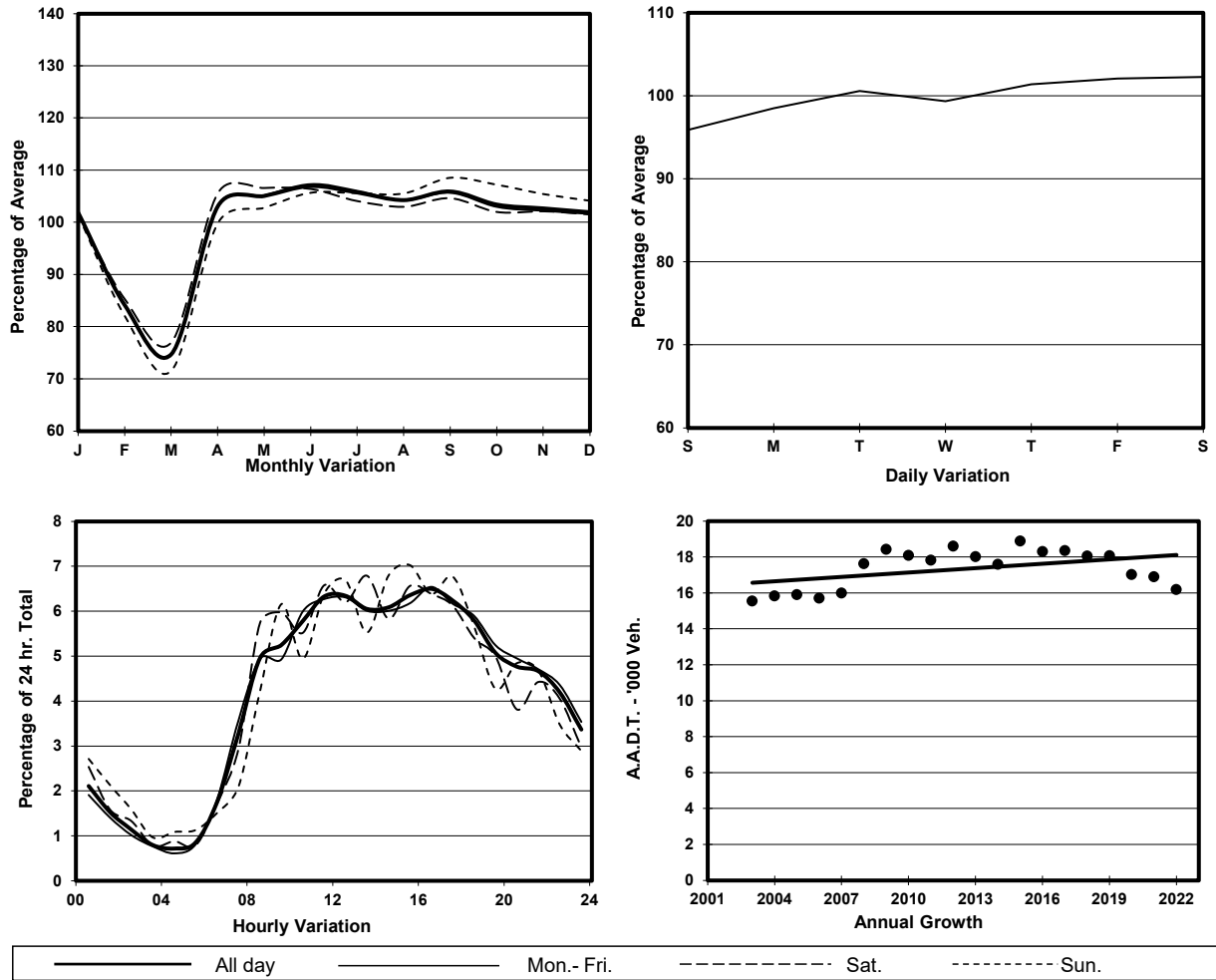
ROAD NETWORK MINOR

ROAD TYPE LOCAL DISTRIBUTOR

LINK TUNG LO WAN RD (from CAUSEWAY RD to MORETON TERRACE)



1. TRAFFIC FLOW VARIATION AND GROWTH



2. TRAFFIC CHARACTERISTICS (BY DIRECTION)

Parameter	All - Day	Mon. - Fri.	Sat.	Sun.
EAST BOUND				
A.A.D.T.	2870	2820	3170	2840
R 12 / 24 - %	73.6	73.3	73.8	74.2
R 16 / 24 - %	91.8	92.3	90.1	90.6
AM Peak Hour	0900-1000	0900-1000	0900-1000	0900-1000
One-way flow at AM peak hour	170	170	180	160
T - % (AM)	-	-	-	-
PM Peak Hour	1600-1700	1600-1700	1600-1700	1800-1900
One-way flow at PM peak hour	180	180	200	210
T - % (PM)	-	-	-	-
Prop.of commercial vehicles - 16 hr.	-	0.5	-	-
WEST BOUND				
A.A.D.T.	13310	13440	13420	12730
R 12 / 24 - %	68	67.9	69.2	67.4
R 16 / 24 - %	86.9	87.3	86.8	84.9
AM Peak Hour	0900-1000	0800-0900	0900-1000	0900-1000
One-way flow at AM peak hour	680	650	810	800
T - % (AM)	-	8.4	-	-
PM Peak Hour	1600-1700	1600-1700	1600-1700	1700-1800
One-way flow at PM peak hour	870	880	860	890
T - % (PM)	-	4.9	-	-
Prop.of commercial vehicles - 16 hr.	-	4.9	-	-

3. OTHER INFORMATION AND COMMENT

4. Vehicle classification and occupancy - Monday to Friday

Time		Class of vehicle									
		Motor Cycle	Private Car	Taxi	Private LB	PLB	Goods veh.		Non Fr. Bus	Fr. Bus	
							Light	M & H		SD	DD
0700-0800	Pro	8.9	29.2	38.9	4.4	0.0	6.2	0.9	8.9	0.0	2.7
	Ocp	1.0	1.3	1.6	11.4	0.0	1.1	2.0	24.4	0.0	20.8
0800-0900	Pro	4.7	59.9	16.7	1.6	0.0	10.9	0.0	4.2	0.0	2.1
	Ocp	1.0	1.4	1.7	3.7	0.0	2.2	0.0	8.5	0.0	20.5
0900-1000	Pro	2.8	64.5	17.4	0.6	0.0	11.8	0.0	1.1	0.0	1.8
	Ocp	1.0	1.4	1.6	2.0	0.0	1.7	0.0	6.5	0.0	13.1
1000-1100	Pro	5.0	48.4	24.8	0.6	0.0	18.0	0.6	0.6	0.0	1.9
	Ocp	1.0	1.5	1.5	4.0	0.0	1.7	1.0	3.0	0.0	8.2
1100-1200	Pro	10.3	52.0	19.9	0.6	0.0	14.1	0.6	0.6	0.0	1.8
	Ocp	1.0	1.4	1.6	1.0	0.0	1.5	1.0	6.0	0.0	20.5
1200-1300	Pro	5.7	47.0	24.5	1.6	0.0	17.2	0.0	2.6	0.0	1.3
	Ocp	1.0	1.6	1.7	7.7	0.0	1.5	0.0	7.6	0.0	17.5
1300-1400	Pro	7.0	50.6	22.5	0.9	0.0	15.5	0.0	1.9	0.0	1.5
	Ocp	1.0	1.6	1.7	2.5	0.0	1.6	0.0	10.3	0.0	14.3
1400-1500	Pro	7.8	48.1	26.1	0.0	0.0	13.4	1.4	1.4	0.0	1.8
	Ocp	1.1	1.4	1.6	0.0	0.0	1.4	1.0	2.5	0.0	13.0
1500-1600	Pro	7.6	45.2	26.7	2.2	0.0	15.2	0.5	1.1	0.0	1.5
	Ocp	1.0	1.4	1.5	3.3	0.0	1.3	1.0	7.0	0.0	12.5
1600-1700 Peak hour	Pro	1.9	58.4	27.0	1.0	0.0	7.7	0.0	1.9	0.0	2.1
	Ocp	1.0	1.7	1.2	4.0	0.0	1.6	0.0	6.0	0.0	9.9
1700-1800	Pro	5.2	57.8	25.0	0.5	0.0	7.3	0.0	2.1	0.0	2.1
	Ocp	1.1	1.3	1.6	2.0	0.0	1.4	0.0	5.8	0.0	13.4
1800-1900	Pro	17.0	51.5	23.4	0.0	0.0	4.1	0.0	2.3	0.0	1.6
	Ocp	1.0	1.5	1.8	0.0	0.0	1.1	0.0	11.5	0.0	20.6
1900-2000	Pro	10.9	50.3	33.5	0.5	0.0	2.0	0.0	1.5	0.0	1.4
	Ocp	1.0	1.4	1.7	3.0	0.0	1.0	0.0	1.0	0.0	11.8
2000-2100	Pro	9.2	51.4	33.6	0.0	0.0	3.7	0.6	0.0	0.0	1.5
	Ocp	1.1	1.5	1.6	0.0	0.0	1.7	1.0	0.0	0.0	9.7
2100-2200	Pro	10.4	47.1	38.5	0.0	0.0	0.6	1.2	0.0	0.0	2.1
	Ocp	1.0	1.6	1.5	0.0	0.0	1.0	2.0	0.0	0.0	6.5
2200-2300	Pro	8.6	44.4	45.1	0.0	0.0	0.0	0.0	0.0	0.0	2.0
	Ocp	1.2	1.6	1.8	0.0	0.0	0.0	0.0	0.0	0.0	5.3
16 hours	Pro	7.5	51.1	27.2	0.9	0.0	9.4	0.3	1.8	0.0	1.8
	Ocp	1.0	1.5	1.6	5.4	0.0	1.5	1.3	10.6	0.0	13.6

Legend: Pro. Proportion of vehicles in % (Sum may not add up to 100% due to figure rounding)*

Ocp. Average occupancy of vehicles including both driver and passengers*

M&H Medium and Heavy

* All traffic data are collected from combined bounds